

# Sensorless Speed Control Of Brushless DC Motor Using Fuzzy Logic Controller

<sup>1</sup>H.Vidhya,<sup>2</sup>I.Abinaya,<sup>3</sup>M.Karthik, <sup>4</sup>R.R.Rubia Gandhi

<sup>1</sup>Assistant Professor,<sup>2</sup> Assistant Professor,<sup>3</sup> Assistant Professor, <sup>4</sup>Assistant Professor

<sup>1</sup>Department of Electrical and Electronics Engineering,

<sup>1</sup>Sri Ramakrishna Engineering College, Coimbatore,India

**Abstract—** Brushless DC (BLDC) motors are coming high energy permanent magnet materials, power semiconductor and digital integrated circuits. In any application requiring an electric motor where the space and weight are at a premium, the BLDC motors becomes the ideal choice. A BLDC motor has high power to mass ratio, good dissipation characteristics and high speed capabilities. Limitations of brushed DC motors overcome by BLDC motors include lower efficiency, susceptibility of the commutator assembly to mechanical wear, consequent need for servicing, less ruggedness and requirement for more expensive control electronics. Due to their favorable electrical and mechanical properties, BLDC motors are widely used in servo applications such as automotive, aerospace, medical field, instrumentation areas, electro mechanical actuation systems and industrial automation requirements. Many control schemes have been developed for improving the performance of BLDC Motor Drives. In this paper, a novel controller for brushless DC (BLDC) motor has been presented. The proposed controller is based on Fuzzy logic controller and the rigorous analysis through simulation is performed using simulink tool box in MATLAB environment. The performance of the motor is analyzed using simulation results obtained. The dynamic characteristics of the brushless DC motor is observed and analyzed using the developed MATLAB/simulink model.

**IndexTerms—** BLDC, Fuzzy logic, speed control.

## I. INTRODUCTION (HEADING 1)

There is an increased requirement on electrical systems today. The system should have better efficiency and reduced electromagnetic. It should be flexible to meet market modification and to reduce development time. Even then, it should be economical satisfying all these constraints. The only motors which have these properties is Brushless DC Motor. Such motors combine high reliability with high efficiency, and for a lower cost in comparison with brush motors. The BLDC Motor is a permanent dc motor fed with rectangular currents and we get trapezoidal back-emf. The brushless characteristic can be applied to several kinds of motors, the AC synchronous motors, stepper motors, switched reluctance motors, AC induction motors. Because of trapezoidal back-emf, it has the following advantages, firstly commutation process is accurate, and the mechanical torque developed by the motor is constant. Secondly, the brushless DC drives show a very high mechanical power density.

## II. LITERATURE REVIEW

Back-emf is sensed without using neutral point of the motor, is applicable for wide speed range but still have accuracy problem at low speed [1] [4] [13]. of dynamic performance of the Modeling is very essential in studying high performance drive before evaluating the concept motor. Modeling helps further to use the drive in high performance applications [3]. A Simple method to implement and improved motor efficiency. In this method, access to motor winding neutral point is required; this will complicate the motor structure and increase the cost [2]. More uniform current waveform, better torque performance but low pass filters are required so that the back-emf difference can be detected with lower sensor diode [6] [7]. Implementation of Fuzzy and it is compared with PID controller which show the superiority of fuzzy to be used for controlling drives [5].

## III. BRUSHLESS DC MOTOR OVERVIEW

The two important parts of BLDC Motor are as follows.

- 1) Stator
- 2) Rotor

### A. STATOR:

It is made up of laminated steel stampings which carry the windings. Windings in a Stator can be arranged in two patterns; i.e., a star pattern (Y) or delta pattern ( $\Delta$ ). The major difference between the two patterns is that the Y pattern gives high torque at low rpm and the  $\Delta$  pattern gives low torque at low rpm.

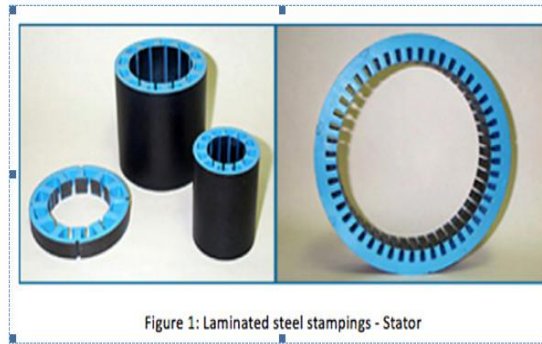


Figure 1: Laminated steel stampings - Stator

**B. ROTOR:**

The rotor has permanent magnet. There is different permanent material. Number of poles depends on application. If there are more number of poles, torque will be better at the cost of decreasing maximum possible speed.



Figure 3: 4 pole and 8 pole - Permanent magnet rotor

**IV. BLDC CONTROL**

It is based on two phase ON operation to control the inverter. In this control, torque production follows the principle that current should flow in two of three phases at a time and there should be no torque production in the region of back-emf zero crossings.

**V. FUZZY LOGIC CONTROLLER**

Fig. 3 shows the structure of fuzzy logic controller with the help of which the speed control could be done.

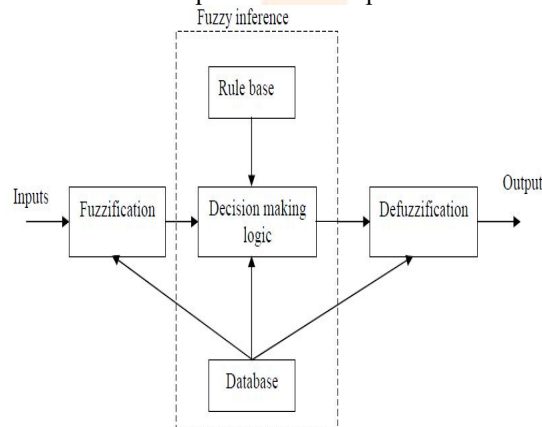


Fig 3

Fuzzy logic uses linguistic terms instead of mathematical equations. Conventional methods became infeasible for complicated mathematical model. However fuzzy logic linguistic terms provide a feasible method for defining the operational characteristics of such system. Fuzzy logic controller can be considered as a special class of symbolic controller. The structure of fuzzy logic controller block diagram is shown in Fig.3. The fuzzy logic controller has three main components.

1. Fuzzification
2. Fuzzy inference
3. Defuzzification

**Fuzzy logic control of the BLDC Motor:**

The fuzzy logic controlled BDCM drive system block diagram is shown in Fig.4. The input variables to the fuzzy logic controller are speed error (E), and change in speed error (CE). The output variable is the torque component of the reference (iref) where irefis obtained at the output of the controller by using the change in the reference current.

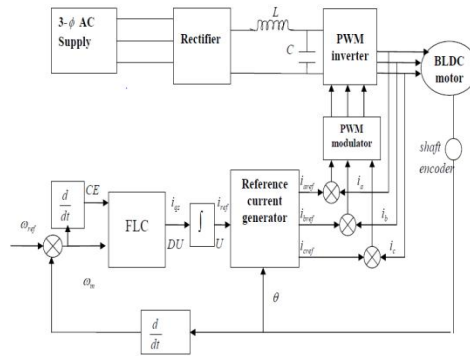


Figure 4.Fuzzy speed control block diagram of the BLDC motor

The controller observes the input pattern and correspondingly updates the output DU and so that the actual speed  $\omega_m$  matches the command speed  $\omega_{ref}$ . There are two input signals to the fuzzy controller, the error  $E = \omega_{ref} - \omega_m$  and the change in error CE. The controller output DU in brushless dc motor drive is current  $\Delta I \cdot q_s$ . The signal is summed or integrated to generate the actual control signal U or current  $I \cdot q_s$ , where K1 and K2 are nonlinear coefficients or gain factors including the summation process shown in Fig.4.

**VI. CIRCUIT DIAGRAM:**

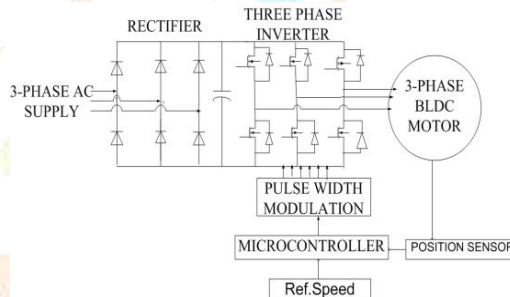


Figure 5.Circuit Diagram

**A.MEMBERSHIP FUNCTIONS:**

The seven fuzzy member's ship functions defined for both inputs to control the speed of BLDC Motor are as follows:

- 1) Positive Big: PB
- 2) Negative Big: NB
- 3) Positive Medium: PM
- 4) Negative Medium: NM
- 5) Positive Small: PS
- 6) Negative Small: NS
- 7) Zero Error: ZE

The input variable speed error and change in speed error is defined in the range of  $-1 \leq \omega_e \leq +1$  and  $-1 \leq \omega_{ce} \leq +1$  and the output variable torque reference current change  $\Delta i_{qs}$  is define in the range of  $-1 \leq \Delta i_{qs} \leq +1$ .

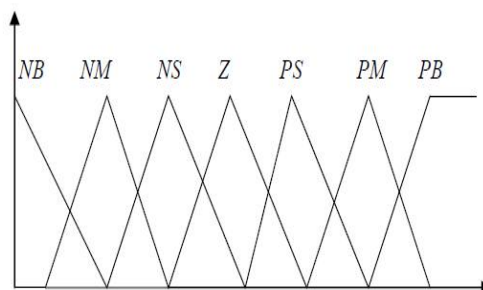


Figure 6.Seven levels of fuzzy membership function

The triangular shaped functions as shown in the fig.6 are chosen as the membership functions due to the resulting best control performance and simplicity. The membership function for the speed error and the change in speed error and the change in torque reference current are shown in figure 6.

**B.FUZZY RULE TABLE:**

For all variables seven levels of fuzzy membership function are used. Table 2 shows the 7\*7 rule base table that was used in the system.

e/ce	NB	NM	NS	ZE	PS	PM	PB
NB	NB	NB	NB	NB	NM	NS	ZE
NM	NB	NB	NB	NM	NS	ZE	PS
NS	NB	NB	NM	NS	ZE	PS	PM
ZE	NB	NM	NS	ZE	PS	PM	PB
PS	NM	NS	ZE	PS	PM	PB	PB
PM	NS	ZE	PS	PM	PB	PB	PB
PB	ZE	PS	PM	PB	PB	PB	PB

Table.2 Fuzzy Rule Table

**SIMULINK MODEL FOR THE PROPOSED SYSTEM:**

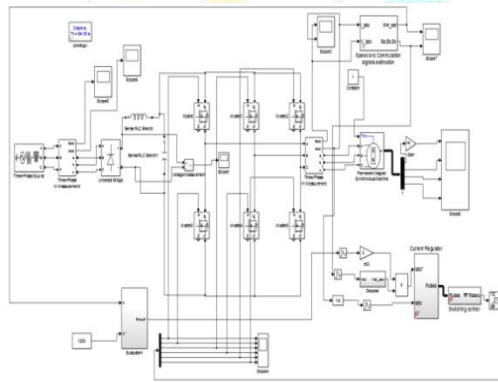


Figure7.Simulink Model

The current control block computes the three reference motor line currents in phase with back-emf, corresponding to torque reference and then feeds the motor with these currents using a three phase current regulators. Current regulator controls the current by delivering current pulses to the switches in order to keep the current inside a user-defined hysteresis band. Motor speed and position are estimated from terminal voltages and current using back-emf observer. The commutation signals are generated from the rotor position every sixty degree electrical. The speed control loop uses a PI regulator to produce the torque reference for the current control block. VII.SPECIFICATION OF THE MOTOR

The table represents the specification of the motor.

PARAMETERS	RATINGS
Power	60W
DC Voltage	460V
Stator Resistance(Rs)	0.2Ω
Stator Inductance(Ls)	8.5e-3H
Flux linkage	0.175 V.s
Back EMF flat area	120 degrees
Viscous damping	0.005 F(N.m.s)
Inertia	0.089 J(kg.m2)
Pole	4

Table.3 Specification of the motor

## VII. RESULTS

The following are the waveforms obtained during simulation.

### A.SPEED WAVEFORM:

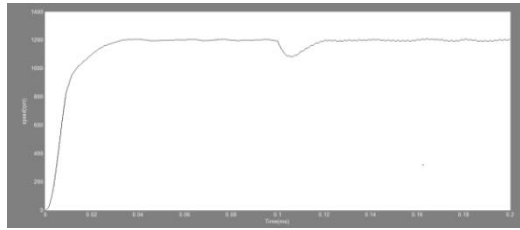


Figure 8.Output-Speed

Reference speed – 1200rpm.

Motor speed after controlling – 1205rpm.

### B.CURRENT WAVEFORM:

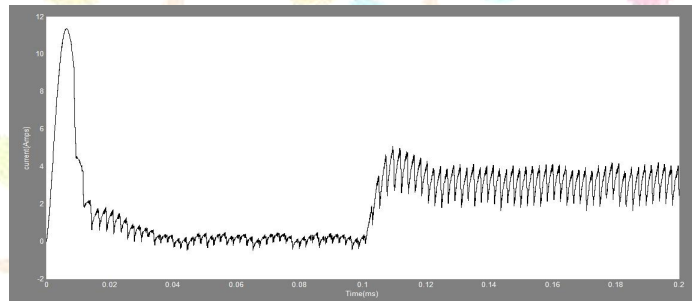


Figure 9.Output-Current

### C.TORQUE WAVEFORM:

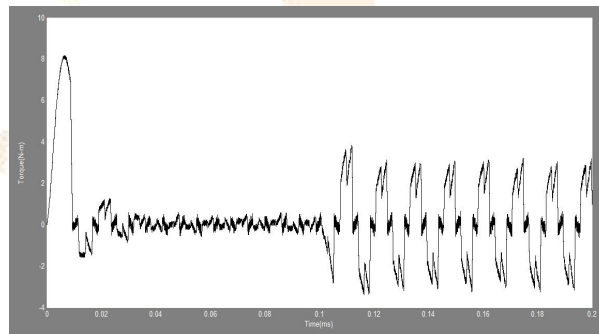


Figure 10.Output – Torque

### D.TRAPEZOIDAL BACK-EMF:

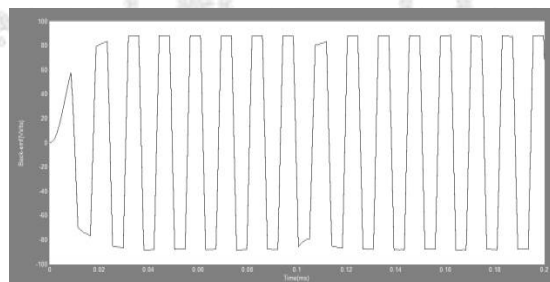


Figure 11.Output-Back-emf

From the above results obtained during simulation, it is shown that the speed of BLDC Motor have been controlled using fuzzy logic controller.

**ADVANTAGES:**

- 1) Fuzzy logic has rapidly become one of the most successful of today's technology for developing sophisticated control system.
- 2) With it aid complex requirement so may be implemented in amazingly simple, easily minted and inexpensive controllers.
- 3) Both in simulations and experimental results that Fuzzy Logic control yields superior results with respect to those obtained by conventional control algorithms.

**VIII. CONCLUSION AND FUTURESCOPE**

The modeling and simulation of the complete drive system is described in this presentation. Simulation runs confirming the validity and superiority of the fuzzy logic controller over conventional controller. This will be helpful in solving problems associated with sensed control and conventional controllers in order to reduce cost and complexity of the drive system without compromising the performance. The proposed work can be implemented in hardware and can be used for better control applications. In future, this can be implemented using Artificial Neural Network (ANN) which results in better performance in the sensorless control area. This method will be more cost effective and have good dynamic response

**REFERENCES**

- [1] Alin , Stirban, Ion Boldea, *Fellow, IEEE*, and Gheorghe-Daniel Andreescu, *Senior Member, IEEE*, " Motion-Sensorless Control of BLDC-PM Motor With Offline FEM-Information-Assisted Position and Speed Observer," IEEE Transactions On Industry Applications, Vol. 48, No. 6, November/December 2012.
- [2] Chenjun Cui, Gang Liu, Kun Wang, and Xinda Song "Sensorless Drive for High-Speed Brushless DC Motor Based on the Virtual Neutral Voltage," IEEE Transactions on Power Electronics, VOL. 30, No. 6, June 2015.
- [3] Gang Liu, Chenjun Cui, Kun Wang, Bangcheng Han, *Member, IEEE*, and Shiqiang Zheng, *Member, IEEE*, " Sensorless Control for High-speed Brushless DC Motor Based on the Line-to-line Back-EMF," IEEE Transactions On Power Electronics.
- [4] Jianwen Shao "A Novel Microcontroller –based Sensorless BLDC Motor Drive for Automotive Fuel Pumps ," IEEE transactions on industry application, November/December 2003.
- [5] Je-Wook Park, *Student Member, IEEE*, Seon-Hwan Hwang, *Member, IEEE*, and Jang-Mok Kim, *Member, IEEE*, " Sensorless Control of Brushless DC Motors With Torque Constant Estimation for Home Appliances," IEEE Transactions On Industry Applications, Vol. 48, No. 2, March/April 2012.
- [6] Liviu Ioan Iepure, *Member, IEEE*, Ion Boldea, *Fellow, IEEE*, and Frede Blaabjerg, *Fellow, IEEE*, " Hybrid I-f Starting and Observer-Based Sensorless Control of Single-Phase BLDC-PM Motor Drives," IEEE Transactions On Industrial Electronics, Vol. 59, No. 9, September 2012.
- [7] Mozaffari Niapour, S.A.KH, Tabarraie, M , Feyzi, M.R (2015) ," A new robust speed-sensorless control strategy for high-performance brushless DC motor drives with reduced torque ripple",
- [8] Purna Chandra Rao, A, Obulesh, Y.P, Sai Babu, Ch, "Mathematical Modelling of BLDC Motor with closed loop speed control using PID Controller under various loading conditions," ARPN Journal of Engineering and Applied Sciences, vol 7, 10, October 2012.
- [9] Shen, J.X, Iwasaki, S, "Sensorless Control Of Ultra-high speed PMLDC Motor using PLL and Third-Harmonic Back-EMF," IEEE transactions on Industrial Electronics, April 2006.
- [10] Shanmugasundaram, R, Muhammad Zakariah, K, Yadaiah, N, "Implementation and Performance Analysis of Digital Controllers for BLDC Motor drives," IEEE transactions on Mechatronics, February 2014.
- [11] Samuel Wang , An-Chen Lee (2015), "A 12-Step Sensorless Drive for BLDC Motors based on Back-Emf Differences," IEEE transactions on Energy Conversion.
- [12] Tae-Hyung Kim, Mehrdad Ehsani, "Sensorless Control of BLDC Motor from near-zero speed to high speed," IEEE transactions on Power Electronics, November 2014.
- [13] Vashist Bist, Bhim Singh (2013), " A reduced sensor PFC BL-Zeta converter based VSI fed BLDC motor drive".
- [14] Yen-Shin Lai, *Senior Member, IEEE*, and Yong-Kai Lin, " Novel Back-EMF Detection Technique of Brushless DC Motor Drives for Wide Range Control Without Using Current and Position Sensors," IEEE Transactions On Power Electronics, Vol. 23, No. 2, March 2008.
- [15] Zhao Wan, Shuangxia Niu, Ho, S.L, Fu, W.N and Jianguo Zhu, "A Position Detection Strategy for Sensorless Surface Mounted Permanent Magnet Motors at Low Speed Using Transient Finite-Element Analysis," IEEE Transactions On Magnetics, Vol. 48, No. 2, February 2012.