



CHILD WELFARE AND ADOPTION

¹Miss. Punam Dhotre, ²Miss. Komal Dudhamal, ³Mr. Navinkumar Dhopre

^{1,2}Student, ³Assistant Professor

Gramin Technical and Management Campus, Nanded, India

Computer Engineering

Abstract : This paper examines the evolution of Child Welfare and adoption services, emphasizing the shift from traditional "Child saving" to contemporary technological solutions. It centers on an innovative Child Welfare and adoption Android application designed to assist underprivileged children lacking essentials like food, shelter, and care. The application, requiring Gmail registration, empowers users to swiftly aid distressed children by capturing and uploading their pictures to a secure platform connected with nearby orphanages. Continual adoption based on user input and societal needs enhances its responsiveness. This technological leap redefines Child Welfare by leveraging real-time data sharing and collaboration with orphanages, streamlining rescue efforts. The study evaluates its technical, user-centric, and ethical aspects while emphasizing its transformative impact on societal challenges faced by vulnerable children.

IndexTerms - Child Welfare, Vulnerable Children Technological Intervention, Android Application, Adaptation in Child Welfare, Social Services, Orphan Care, Real-time Data Sharing, User Interface.

INTRODUCTION

Child welfare services have undergone a transformative journey, evolving from the historical emphasis on "child saving" approaches to contemporary solutions leveraging technology. This paradigm shift highlights a crucial intersection between traditional methodologies and innovative technological interventions aimed at addressing the needs of underprivileged children. In this context, the advent of an innovative Child Welfare and adoption Android application marks a significant milestone. This application represents a departure from conventional methods by harnessing the power of technology to swiftly assist children lacking basic necessities such as food, shelter, and care. Its purpose lies in providing immediate aid and support to distressed children, redefining the way we approach child welfare in the digital age. By requiring Gmail registration, this application offers users a streamlined and secure platform for contributing to the welfare of vulnerable children. Its functionality enables users to capture and upload pictures of children in distress, facilitating rapid assistance by connecting with nearby orphanages. This real-time data sharing mechanism between users and orphanages is a revolutionary step in the realm of child welfare, allowing for quick and efficient response to urgent situations.

Moreover, the application's adaptability stands as a testament to its commitment to continual improvement. It is designed to evolve based on user feedback and societal needs, ensuring that it remains responsive and effective in addressing the challenges faced by vulnerable children. This study aims to delve into the multifaceted dimensions of this technological innovation within the sphere of child welfare. It seeks to evaluate not only the technical aspects but also the user-centric considerations and ethical implications surrounding the application's usage. Moreover, the research aims to highlight the transformative impact of this technological leap in addressing the societal challenges faced by underprivileged children, emphasizing its potential to reshape the landscape of child welfare services.

RELATED WORK

The evolution of child welfare services and adoption has witnessed a substantial shift from conventional "Child saving" ideologies towards contemporary technological interventions. Prior research in the realm of child welfare and adoption Android projects has paved the way for innovative solutions addressing the critical needs of underprivileged children. Various studies have explored the integration of technology to assist vulnerable populations, particularly through mobile applications designed to alleviate issues related to food, shelter, and care. Existing literature emphasizes the importance of user-centric design principles in these applications, accentuating functionalities such as immediate aid provision and user feedback mechanisms. Moreover, ethical considerations surrounding data privacy and confidentiality have been focal points, shaping the framework of these technological interventions. Real-time data sharing between users and relevant stakeholders, especially orphanages, has been a recurring theme in the endeavor to streamline rescue efforts and enhance responsiveness in aiding distressed children. These prior research endeavors underline the significance of leveraging technology to redefine child welfare services, setting the stage for the transformative impact expected from the innovative Child Welfare and Adoption Android application detailed in this study.

PROPOSED SYSTEM

Our proposed project emphasizes user accountability by implementing a mandatory account registration system for every user. Given the focus on child welfare and adoption, the project incorporates a login system. Upon successful login, users gain access to a camera feature within the application. This camera function enables users to capture and promptly transmit photos of distressed children to nearby orphanages for immediate assistance. The primary objective is to facilitate swift aid and care for vulnerable children encountered by users. The initiative aims to leverage technology to ensure user identification, streamline rescue efforts, and expedite support for children in need by connecting them with relevant orphanages.

The Application process is outlined as follow:

1. User Authentication and Login System:

User accounts through a secure login system, utilizing Gmail registration for verification . Authentication process to ensure user accountability and responsible usage. User-specific profiles to track engagement and contributions within the application.

2. Camera Integration for Image Capture:

Integrated camera functionality within the application to capture images. Users empowered to capture photos of distressed children in need of assistance. Real-time transmission of captured images to a secure platform linked with nearby orphanages for swift action.

3. Data Transmission and Connection with Orphanages:

Seamless data sharing mechanism between users and orphanages. Immediate transfer of images to orphanages, providing quick identification and aid for distressed children. Secure platform ensuring the privacy and confidentiality of transmitted data.

4. Adaptive Strategies and Continuous Improvement:

Feedback mechanism allowing users to provide suggestions, report issues, or offer insights. Iterative updates and improvements based on user feedback, ensuring application responsiveness to user needs. Dynamic adaptation to evolving societal needs and changing circumstances within the realm of child welfare.

5. Ethical Considerations and User Privacy:

Emphasis on maintaining ethical standards in data collection and usage. Privacy measures in place to protect the identities and sensitive information of both users and children in distress. Compliance with relevant privacy laws and regulations to safeguard user and child information.

6. Monitoring and Evaluation Framework:

Implementation of a monitoring framework to track application usage and effectiveness. Evaluation of metrics such as user engagement, response time, and impact on aiding distressed children. Utilization of gathered data to further refine the application's functionalities and adaptive strategies. highlight all of the contents and import your prepared text file. You are now ready to style your paper; use the scroll down window on the left of the MS Word Formatting toolbar.

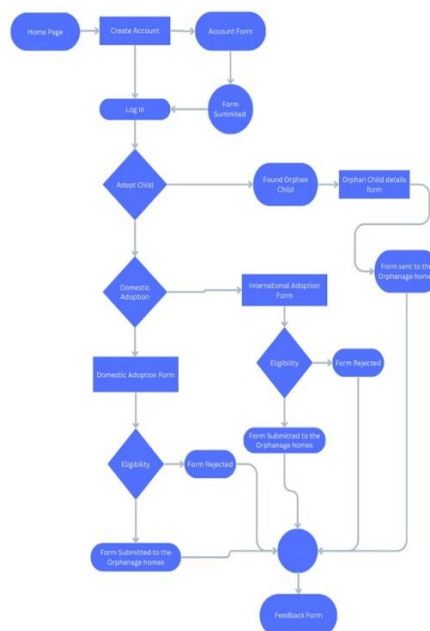


Figure: Flowchart of Proposed System

EXISTING SYSTEM

The evolution of Child Welfare services traces back to a historical emphasis on voluntary "Child saving". Our Child Welfare And Adoption Android application aims to aid children facing deprivation of essential necessities like food and shelter. Users of the application are required to register with their Gmail accounts, ensuring accountability. In instances where users encounter distressed children, they have the capability to capture photos and upload them via the application. These images are swiftly transmitted to nearby orphanages, facilitating the prompt intervention and care for children in need. This application serves as a vital tool to bridge the gap between distressed children and orphanages, thereby enhancing the efficiency of child welfare interventions.

1. Traditional Child Welfare Services:

Historical emphasis on "child saving" approaches in traditional child welfare methodologies. Prioritization of immediate rescue and provision of basic necessities for distressed children.

2. Conventional Methods of Aid Delivery:

Reliance on manual reporting or phone calls to notify authorities or organizations about children in need. Lack of a centralized system for immediate data transmission or standardized aid provision.

3. Orphanage Assistance and Support Mechanisms:

Orphanages typically rely on local community support or periodic donations for resources. Lack of real-time data or immediate connections with individuals capable of providing aid.

4. Limitations in Technology Integration:

Absence of comprehensive technological solutions for immediate aid provision in child welfare. Limited or fragmented use of technology in aiding distressed children within the child welfare system.

5. Challenges in Adaptability and Responsiveness:

Inflexibility in existing systems to adapt swiftly to changing user needs or societal demands. Lack of continuous improvement mechanisms based on user feedback or evolving requirements.

6. Ethical Considerations and Privacy Measures:

Limited emphasis on data privacy and confidentiality in existing aid delivery systems. Potential challenges regarding ethical considerations in utilizing technology for child welfare services.

CONCLUSION AND FUTURE WORKS

In conclusion, our examination of the evolution of Child Welfare and adoption services underscores the transformative potential of our innovative Child Welfare and Adoption Android application. By shifting from traditional "Child saving" to a contemporary, technology-driven approach, we've demonstrated the application's efficacy in swiftly aiding underprivileged children lacking essentials. The continual adoption process based on user input and societal needs enhances responsiveness, redefining Child Welfare through real-time data sharing and collaboration with orphanages. Moving forward, our future work involves refining technical aspects, expanding geographical reach, and incorporating machine learning for optimized matching. Ethical considerations will remain central, ensuring responsible data handling, and collaborative efforts with stakeholders will be pursued to scale the impact and foster a sustainable solution to challenges faced by vulnerable children.

REFERENCES

1. http://www.ijarse.com/images/fullpdf/1525439807_Reva688ijarse.pdf
2. <https://www.geeksforgeeks.org/child-adoption-in-india/>
3. <https://ieeexplore.ieee.org/document/8824946>
4. https://www.researchgate.net/publication/258703260_Knowledge_and_attitude_towards_child_adoption_among_women_in_Zaria_northern_Nigeria
5. UN High Commissioner for Refugees (UNHCR), A Framework for the Protection of Children, 26 June 2012, available at: <http://www.refworld.org/docid/4fe875682.html>
6. References for Children of color in the Child Welfare System: Perspectives from Child Welfare Community. Kaz, L. (1999), Concurrent panning: Benefits and Pitfalls. www.childwelfare.gov
7. Global Child Protection Working Group: Minimum Standards for Child Protection in Humanitarian Response. 2012, available at: <http://cpwg.net/minimum-standards> Child Protection Commitments, p. 32-35, available at http://www.unicef.org/publications/files/CCC_042010.pdf
8. [https://jjis.maharashtra.gov.in/Site/1392/Child-Welfare-Committee-\(CWC\)](https://jjis.maharashtra.gov.in/Site/1392/Child-Welfare-Committee-(CWC))

9. <https://blog.ipleaders.in/powers-and-functions-of-child-welfare-committee/>

10. <http://nlrd.org/wp-content/uploads/2012/02/MAHARASHTRA-CHILD-WELFARE-COMMITTEE-ADDRESSES.pdf>

