



How can technological innovations such as 3D scanning, quantum computing, and virtual reality help with the restoration and protection of endangered historical sites and cultural artefacts?

Geetanshu Gulati
Student
Modern School, Vasant Vihar

Abstract

This research paper delves into the endangering forces affecting historical sites, emphasizing climate change-induced disasters, seismic activity, urban development, tourism impacts, and illicit trade. It then introduces the Diffusion of Innovations model as a framework to understand the integration of 3D scanning, quantum computing, and virtual reality (VR) into heritage conservation. An indepth case study featuring the Taj Mahal is then integrated into the paper to further illustrate the practical applications of the aforementioned technologies in a real-life scenario.

Key Words: Heritage sites, Cultural artefacts, Preservation, Restoration, Innovation, 3D scanning, Quantum computing, Virtual reality

Introduction

What if we proclaimed that time travel is no longer confined to the pages of science fiction but lies at the crossroads of algorithms, cutting-edge technology, and digital artistry?

For millennia, historical marvels have stood on the precipice of oblivion, barely surviving the test of time, natural disasters, and human intervention. These monuments and artefacts are crucial to the fabric of our lives: they unveil ancient customs, societal evolution, ideology, trade, and technological achievements. They hold economic,

touristic, anthropological, archaeological, emotional, and architectural significance. For instance, in India alone, over 26 million people visited monuments with the purchase of tickets in 2022, out of which a significant portion comprises 318 thousand international tourists (Statista, 2023).

Taking cognizance of the history, lost legacies, and unanswered questions that lie beneath the ruins and rubble of these monuments, several approaches have been introduced in recent years with the aim of protecting and preserving them. However, traditional approaches may have some shortcomings that can possibly be overcome with digital resurrections - these would offer not only an avenue for art, architecture, and anthropology to advance through immersive exploration but also a more radical approach, commensurate with the issue at hand.

Underlining a pivotal shift towards contemporary technology to achieve our goals is imperative. This would include methods like *3D scanning*, that offer a meticulous capture of physical details and potential blueprints for architectural reconstruction. Harnessing the capabilities of *quantum computing* and its mechanical principles would lead to our gain of the ability to accelerate and refine this process of calculation. Moreover, integrating a *virtual reality (VR)* model would enable immersive exploration and, in turn, facilitate an accurate rebuild, aligning seamlessly with the overarching goals of comprehensive restoration and protection.

In this arena, strides have been boundless. Within *3D scanning*, AI-fueled models enhance precision. *VR* advances interweave with other technologies to enable more engaging user experiences. While scarce, *quantum computing's* leaps promise a future of profound innovation. All of these, when applied to the issue at hand, hold promise. In line with the aforementioned, the research question posed for this paper is, “*How can technological innovations such as 3D scanning, quantum computing, and virtual reality help with the restoration and protection of endangered historical sites and cultural artefacts?*”

The paper aims to test and analyze an alternative strategy for the conservation of our heritage: employing new technologies to breathe back life into monuments and cultural artefacts must stand as a cornerstone for effective preservation.

Analysis of Endangering Forces and Significance of Protection of Heritage Sites

NATURAL FORCES:

Climate change-induced disasters

Increasingly severe and frequent weather events have the potential to wreak havoc on cultural sites. Climate change-induced disasters are one of the most pressing threats to historical monuments and cultural artefacts.

Climate change exacerbates these issues, making preservation efforts all the more critical (Cacciotti et al., 2021). Hurricanes, floods, wildfires and erosion are the leading causes of the damage.

Hurricanes and Floods

Hurricanes can submerge buildings and artefacts in water for unlimited periods of time. This weakens the structural integrity of the monument. Excessive moisture from water can create conditions conducive to the growth of mould and bacteria, which can further degrade historic materials and artworks. A notable example is the destruction of Castillo de San Marcos - a historical fort in Florida - wherein the 2017 Hurricane Irma caused widespread damage to the fort which was constructed using a limestone called coquina, which is apparently particularly susceptible to erosion via saltwater (Ostrander, 2020). This hurricane was influenced by many factors, climate change being a major one since it was a tropical cyclone. (Tallahassee, FL Weather Forecast Office, 2019)

Wildfires

Wildfires can directly engulf historical monuments, leading to the destruction of wooden elements, thermal stress on the stone and metal elements of monuments and further damage to roof structures and other flammable materials - causing structural collapse, cracks and deformation. Moreover, ash, smoke, and soot from wildfires can coat buildings and artwork – potentially damaging them. In 2018, for instance, devastating wildfires raged through Brazil. These primarily affected the 200-year-old National Museum of Brazil in Rio de Janeiro, which housed an extensive collection of historical and cultural artefacts (Al Jazeera, 2018). The fire consumed a substantial part of the museum's holdings, including ancient Egyptian artefacts, indigenous Brazilian art and artefacts, fossils, dinosaur bones, and countless other historical and cultural items. These wildfires that led to huge cultural, archaeological, and scientific losses were not directly caused by natural factors but were also the influence of a combination of human factors, including negligence and inadequate fire prevention measures.

Erosion

Erosion, both by wind and water, has silently eroded the grandeur of countless historical monuments. Coastal heritage sites are particularly vulnerable, as rising sea levels and increased storm intensity accelerate erosion. The Moai Statues on Easter Island that were created by the Rapa Nui people have been subjected to this phenomenon. They were known for their massive size and distinctive features but erosion led to the structural instability and degradation of the cultural and artistic significance of such an artefact (Casey, 2018). The aforementioned can be seen in the images below (the image to the left is the statues prior to erosion and the image to the right is after the erosion)



Seismic Activity

Earthquakes can have a profound impact and destructive effect on cultural monuments and historical structures. The impact of seismic activity on these monuments varies depending on factors such as the magnitude of the earthquake, the proximity of the epicentre, the construction materials of the monument, and the quality of its maintenance and preservation (Bormann and Saul, 2009).

The most immediate and visible impact of seismic activity on monuments is structural damage. Earthquakes can induce ground shaking that exerts lateral and vertical forces on buildings and monuments. It can also lead to settlement or shifting of the foundation, causing instability. This can result in leaning or tilting monuments, can result in stone damage due to cracking, and even partial or complete collapse of structures which can be especially precarious for tall or heavy structures (for example, columns, ornaments and facades). Moreover, artwork, frescoes, and paintings on the walls and ceilings of historical monuments can be damaged or detached from surfaces. Roof collapses can expose the interior of the monument to further damage. Internal structural damage, such as compromised reinforcement or weakened load-bearing components, may not be visible but can pose long-term risks to the monument's stability.

In August 2016 an earthquake of magnitude 6.2 ± 0.016 hit Central Italy at its epicenter – the medieval town Amatrice (Blasetti et al., 2017). It resulted in not only the loss of historical and cultural artefacts, collapse, and destruction of architecture from the Middle Ages but also an estimated economic loss between \$1 billion to \$11 billion and human life (Civil Protection Department, 2018). Amatrice's historic core was reduced to ruins, including the 13th-century Church of Sant'Agostino and the Civic Tower. The earthquake also cracked the 'Baths of Caracalla' in Rome. This calamity resulted in the loss of invaluable art, relics, irreplaceable frescoes, sculptures, paintings, and manuscripts. Due to the Italian seismic code, a lot of these could not be rebuilt or preserved (Cosenza et al., 2018). Considering the loss, there is a clear requirement for implementing stringent preservation planning, and disaster preparedness strategies to restore these invaluable treasures in earthquake-prone areas.

MAN-MADE FORCES:Urban Development and Pollution

Preserving and protecting endangered historical sites and cultural artefacts against the adverse impacts of the pervasive forces of industrialisation and urbanisation presents many challenges. These activities lead to air pollution which tarnishes the visual appeal and eats away at the structural integrity of a monument. Safeguarding the inherent beauty of these sites becomes crucial when considering factors such as the accumulation of soot and grime on their surfaces. Urbanization can release sulfur dioxide (SO₂) and nitrogen oxides (NO_x), contributing to acid rain when mixed with precipitation. Acid rain corrodes stone and metal, which are the fundamentals of many structures, resulting in instability and concerning environmental deterioration.

While urbanization is beneficial for business and expansion, its disadvantages don't stop at just pollution. Heritage temple towns are frequent targets for the rapid transition to urbanization, which inevitably, ends up being a threat to the historical and cultural buildings there (Kiruthiga and Thirumaran, 2019)

Balancing modern development with the protection of historical and cultural structures is much needed. A notable example of this balance is the flooding of the ancient Nubian City of Abu Simbel due to the construction of the Aswan High Dam in Egypt. This resulted in the relocation of Abu Simbel temples from their roots (Webuild S.p.A., 2020).

Tourism Impacts

Tourism is a double-edged sword, offering economic and social benefits but also a posing threat to heritage. The allure of castles, churches, museums and more draws an influx of tourists eventually resulting in wear and tear and overwhelming these delicate sites. The handling of artefacts carries inadvertent harm and foot traffic risks diluting the essence and memory of historical and cultural attractions, reducing them to commercialized spectacles and overshadowing their authenticity. Tourism serves as a conduit for the public to encounter heritage, facilitating its preservation and ensuring its enduring economic and societal relevance.

A significant example is the City of Venice in Italy. Tourism has led to the reconstruction of many historical sites and supported the local economy which is highly dependent on visits from tourists, souvenir shops, hotel stays, etc. (Postma and Schmuecker, 2017). However, it has also single-handedly caused a housing crisis, an increase in water levels and cultural and environmental erosion. Places like the Rialto Bridge and the Bridge of Sighs have lost their historical serenity and become a backdrop for selfies.

Illicit Trade

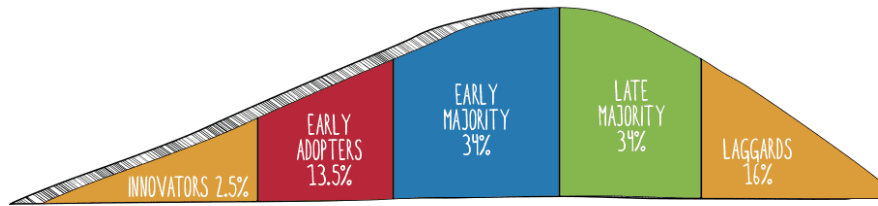
The underground art trade is a troubling global dilemma. Cultural artefacts and revered treasures of the past are preyed upon by traffickers who smuggle them through clandestine channels and into the hands of exploitative collectors. The underground market deprives nations of cultural heritage that is rightfully the peoples'. The theft of paintings, manuscripts, weaponry and more from museums creates a void where once history thrived and fuels a destructive cycle, turning them into commodities to be owned instead of history to be appreciated.

Heists of such items are popular in movies and TV shows. Films like 'The Thomas Crown Affair' often romanticise these notions, glamourising undeniable loss. This obviously reflects on real-world manifestations of such activities. Even though there are campaigns like 'The Real Price of Art' championed by UNESCO (UNESCO, 2020), to shed light on these events, data about this is scarce. War is an infamous foreground for this trade. Numerous valuable artefacts and archaeological treasures were stolen from museums, archaeological sites, and private collections in Iraq (Kam, 2004). These looted items, including ancient Mesopotamian artefacts and cultural heritage dating back thousands of years, were smuggled out of the country through illicit networks. This fueled a cycle of violence and extreme instability in those regions (Samuel, 2018). Harnessing digital tools to solve these problems may be the best option here.

In conclusion, the loss of these treasures not only robs us of our history but also diminishes our understanding of ancient engineering and architectural marvels.

Technological Innovations and the Diffusion of Innovations Model

The '**Diffusion of Innovation Model**' is a structure that guides us through the intricate process by which new ideas, products, and technologies spread across the community. It is a *fundamental pillar of social science research*, that seeks to elucidate the process through which innovations are integrated into society (Halton, 2023). In essence, it is a *marketing model* that offers a framework for comprehending how new technologies or ideas can be distributed across different adopter groups within a population. This is done by categorizing adopters into distinct groups, ranging from innovators and early adopters to the majority and laggards. This segmentation provides a nuanced perspective on the diffusion process, accounting for varying willingness and readiness among individuals and organizations to adopt innovations



ESSENTIAL MARKETING MODELS [HTTP://BIT.LY/SMARTMODELS](http://bit.ly/smartmodels)

By examining the dynamics at play, innovators and researchers can analyze why some technologies are well-received while others become obscure (Sahin, 2006).

The attributes dictating the adoption process are (Sahin, 2006):

Relative Advantage assesses the innovation compared to existing alternatives. It's the process of analyzing the 'superiority' of the new technology compared to the old. Innovations that offer substantial advantages in terms of cost savings, efficiency, and preservation tend to diffuse more quickly.

Compatibility gauges the alignment of innovation with the existing values, needs, and practices of the people, emphasizing potential adopters. Innovations that seamlessly fit into established routines are more likely to be integrated.

Complexity evaluates the difficulty of understanding and using the innovation. Innovations that are simple and user-friendly are often favoured by adopters.

Trialability reflects the degree to which an innovation can be experimented with on a small scale before full adoption. Innovations that allow for trial runs reduce the perceived risk and are thus more likely to be adopted.

Observability assesses the extent to which the results of adopting an innovation are visible to others. Innovations with observable benefits tend to spread more rapidly as others witness their positive effects.

Modern technology must be assessed by all these factors before being implemented on a large scale in society. The Diffusion of Innovation model is especially crucial when considering technologies like 3D scanning, quantum computing, and VR and their potential applications to spaces like heritage conservation and digital preservation. We require a comprehensive understanding of how these innovations fit into the lives and needs of individuals, organizations, and communities. These relatively newer technologies have the potential to revolutionize various fields, from preservation and restoration to computing and data processing.

3D scanning

3D scanning is one such technology that could revolutionize heritage conservation. It has the potential to create highly accurate digital replicas of historical artefacts, buildings, and cultural treasures. It is known for the precise and non-invasive way it captures physical objects and environments in three-dimensional digital formats. This process utilizes specialized hardware, such as laser and structured light cameras, to capture a multitude of data points across the surface of an object, creating a point cloud that represents its geometry in fine detail. When data processing algorithms are applied, it allows the enablement of the reconstruction of a highly accurate 3D model that faithfully reproduces the shape, texture, and structure of the scanned object. Its ability to create precise digital replicas of real-world objects has revolutionized industries and research practices, opening up new avenues for analysis, visualization, and design.

It also aligns with the principles of the Diffusion of Innovation model (Marak, Tiwari and Tiwari, 2019). 3D scanning excels in offering a substantial ***relative advantage*** over traditional preservation methods. Unlike manual measurements and drawings, 3D scanning captures intricate and highly accurate data in a non-destructive manner. This would provide heritage preservation professionals with an invaluable tool, significantly enhancing the quality and comprehensiveness of their work. It also exhibits an exceptional degree of ***compatibility*** with existing practices in heritage preservation. Whether conducting archaeological surveys, conservation assessments, or restoration projects, it can be easily integrated. Its versatility ensures that it complements rather than disrupts established methodologies. The ***observability*** of 3D scanning's positive impact is a cornerstone of its adoption within the heritage preservation community. The visual output of 3D scans provides tangible and immediate results that are easily interpretable by both experts and non-experts alike. These striking visual representations not only enhance understanding but also serve as compelling evidence of the technology's efficacy. Overall, 3D scanning exemplifies the model attributes in innovation diffusion, making it an ideal technological innovation for restoring and protecting historical sites and cultural artefacts.

Quantum computing

Quantum computing represents a paradigm shift in the realm of data processing and computation. Its potential to solve complex problems exponentially faster than classical computers holds immense promise across various industries. Unlike classical bits, which can represent either 0 or 1, quantum bits or qubits can exist in a superposition of states, enabling them to represent both 0 and 1 simultaneously (Borg and Nguyen, 2023). This makes them ideal for application to problems where the regeneration or reproduction of data must be fast and accurate. However, quantum computing is still in its infancy, facing significant challenges in terms of error correction and scalability. Still, there have been significant benefits due to its integration into preserving artefacts.

A notable example is the use of quantum dots to preserve historic limestone monuments. Quantum dots are nanoscale semiconductor particles with unique optical and electronic properties. Their size dictates the quantum effects they exhibit, allowing precise control of light emission. Often used in display technologies, quantum dots enhance colour accuracy and brightness (Bera et al., 2010).

Researchers in Spain and Greece have developed a novel preservation method for limestone heritage sites. They created a nanocomposite called "Nanorepair UV," blending calcium hydroxide nanoparticles with zinc oxide quantum dots. These quantum dots, acting as markers, emit fluorescent light when exposed to UV light, aiding in monitoring the treatment's penetration and performance. The nanocomposite demonstrated superior effectiveness and durability in tests, offering a promising solution for safeguarding limestone structures, including historic monuments, against weathering and degradation (Dacey, 2020).

It is thus evident that quantum technology holds immense potential to revolutionize various scientific and industrial domains through commercial integration. This can also be proved through the Diffusion of Innovations model. Quantum computing undeniably offers a *relative advantage* when it comes to processing power and speed. The nature of quantum bits grants the computer the potential to solve extremely complex problems aggressively faster. In a data-driven world, applications of quantum computing allow us to perform tasks that were once insurmountable in practical timeframes, such as simulating the behaviour of molecules for drug discovery or optimizing supply chains. Its application in heritage conservation would centre around modelling, analysis of data, and complex simulations. *Compatibility*, however, poses a challenge when it comes to this technology. Incorporating quantum computing into established computing infrastructures and programming languages presents a challenge owing to the fundamentally distinct nature of quantum computation. However, as it matures, bridging the gap will become much more feasible. Quantum computing is also known for its inherent *complexity*. Fortunately, quantum computing allows for *trialability and experimentation*. Organizations can initiate pilot projects to explore quantum computing's potential benefits in specific conservation tasks. A range of tasks including material analysis, pattern recognition, and artefact authentication could be used as a basis to experiment with this tech.

Virtual reality (VR)

VR “is a simulated 3D environment that enables users to explore and interact with a virtual surrounding in a way that approximates reality, as it is perceived through the users' senses” (Sheldon, 2022). This environment is created with the help of both hardware and software and may require users to wear goggles or helmets to further interact with the environment. Elaborating on the aforementioned, in a typical VR format, a user would wear a helmet with a stereoscopic screen whereby they can view animated images of a simulated environment. The immersive element

or the illusion of actually being present in the environment is a result of motion sensors that detect the movements of the user and adjust the view on the screen accordingly (Lowood, 2018).

In the context of the diffusion of innovation model, VR can be deemed to have a *relative advantage* when it comes to the preservation and conservation of historical sites. For instance, similar to 3D scanning, this technology can establish three-dimensional digital models of sites to record real and accurate shape information and texture information. This can then be studied in detail by researchers overcoming the requirement for direct contact with the cultural relics. Furthermore, VR displays a high degree of *compatibility* with existing preservation and restoration practices. For example, if any physical preservation tactics need to be employed, VR provides a feasible platform for these to first be tested on virtual models of the sites. Even practices of tourism, which have previously been restricted or controlled to minimize damage to the sites, can become heavily dependent on VR whereby tourists may be able to visit and discover the historical site virtually, reducing any physical contact. Luckily, VR is not very *complex* but instead can make complex practices simpler. Finally, it is a technology which has a high level of *trialability* and *observability* in the results it generates.

Application of Technologies in Preserving Taj Mahal

The Taj Mahal, a UNESCO World Heritage Site, is celebrated globally for its beauty and historical importance. Built in the 17th century by Emperor Shah Jahan in memory of his beloved wife Mumtaz Mahal, this pristine white marble mausoleum stands as a testament to eternal love and Mughal architectural brilliance (Britannica, 2019). Taking cognizance of the historical significance, intricate architecture, and importance that shroud this iconic monument, we must study that it is in fact, fragile in the face of multiple threats. If we look at its present condition, we unearth the looming peril that threatens its preservation.

One of the foremost challenges that the Taj Mahal grapples with is **air pollution** (Perappadan, 2015). Situated in Agra, India, the city is plagued by high levels of air pollution due to vehicular emissions, industrial activities, and construction dust. Its current AQI level teeters between a minimum of 105 and a maximum of 146. This is extremely unhealthy and poses threats to the architectural foundation of all buildings around and human life. The fine particulate matter in the air, laden with chemicals and pollutants decimates the delicate marble facade of the Taj Mahal. This pollution has led to the yellowing and staining of the pristine white marble, eroding its aesthetic and structural integrity.

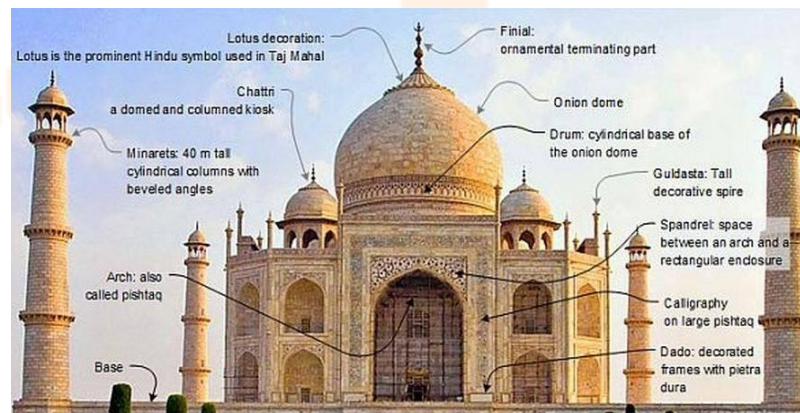
Environmental factors also weigh heavily on the Taj Mahal's preservation. The monument is situated along the Yamuna River, which has faced ecological degradation due to industrial effluents and urban waste disposal. Recent effects of global warming have also caused multiple floods to occur, originating from the Yamuna, which, as

discussed in previous sections, can erode the monument. This poses a threat to the foundation of the Taj Mahal, as the water levels and pollution in the riverbed undermine its structural stability.

Tourism, while a source of revenue, needs to be addressed. The footfall of millions of tourists annually places considerable wear and tear on the site. The physical impact of countless visitors and their interactions with the monument causes incremental damage over time. An issue of late has been the unregulated number of visitors, which on some days is over 50,000 (Perappadan, 2015).

With this in mind, we must consider shifting off traditional methods of preservation due to the scale of damage and the required attention to detail. Thus, it is believed a paradigm shift to contemporary technology is needed. Approaches involving 3D scanning, quantum computing and VR would be, in the context of their applications with the Diffusion of Innovation Model, highly recommended.

Taj Mahal's architectural uniqueness is a testament to Shah Jahan's vision. The complexity and authenticity of this monument is hard to capture. It is put apart from other indo-islamic architecture due to specific features. The tomb's off-centre placement within the quadripartite garden, a raised tomb on a square platform with extending minarets, the square exterior, the octagonal cenotaph chamber, and the marble lattice screen are all intricately inlaid with precious stones. The garden gate stands at the forecourt's centre, and the Taj Mahal's symmetrical design emphasizes bilateral symmetry (Archi-Monarch, 2022).



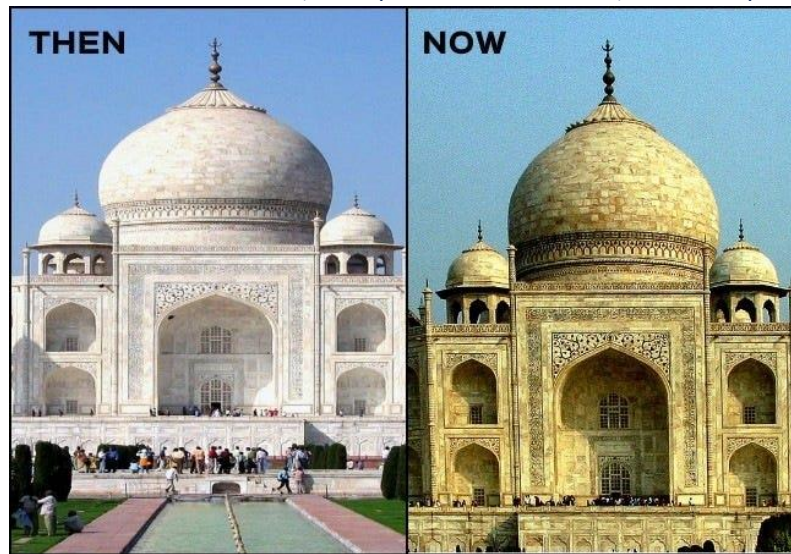
3D Scanning technology can be effectively leveraged to protect these specific features. 3D scanning can be employed to **create digital models of the columns and facades** of the Mughal Era by preserving their historical significance and architectural details. These digital replicas would serve as invaluable references for documenting the site's historical facts and intricacies, enabling a more comprehensive approach to research and analysis.



One of the critical challenges facing heritage conservation is the restoration and reconstruction of damaged or deteriorated artefacts and structures. 3D scanning technology provides an effective solution by offering a **detailed, accurate representation of heritage items and architectural structures**. For example; the cenotaph of Mumtaz Mahal (photographed below) holds cultural, religious, and artistic significance. Its scans, in case of degradation, would serve as a foundation for restoration efforts, ensuring that the reconstruction process maintains historical accuracy.



Monitoring and assessing the condition of heritage objects in real time is crucial to their preservation. 3D scanning technology offers a powerful tool for this purpose. By regularly scanning and comparing digital models, conservators can identify signs of deterioration, enabling timely interventions to protect and preserve these cultural treasures. The ability to monitor the Taj Mahal's condition over time ensures its long-term survival in the face of environmental challenges.



The ever-increasing footfall of tourists poses a significant threat to the Taj Mahal's physical and structural integrity. In response, 3D scanning technology and **VR**, both offer a novel approach to mitigate these challenges. More specifically, with the use of VR, there is an impressive potential to **revolutionise the tourist experience**. For instance, VR can be used to enable historical re-creations - this can allow visitors to step back in time and witness the construction, significant historical events and evolution of the monument. The aforementioned can be useful from an educational standpoint - educational not only with regard to the fine details and history of the monument but also with regard to the gradual destruction of the moment, aiding the realization of the need for populations to be more respectful towards such sites. Beyond this, even tours of the monument can be shifted to the digital through the use of VR. This has been witnessed around the world with museums such as the renowned Louvre in Paris providing global tourists with the opportunity to discover the significant site through virtual tours. In the case of the Taj Mahal, such use of technology would imply that tourists could discover all corners of the monument without the worry of them littering or damaging the monument in any way. Moreover, this would also be beneficial to disabled tourists as a virtual tour can make the monument more accessible to them.

Overall, 3D scanning technology and VR hold tremendous promise in preserving and managing the Taj Mahal's cultural heritage in an era marked by environmental challenges and high tourism impact. By leveraging the capabilities of 3D scanning, we can ensure the accurate preservation of historical details, facilitate restoration efforts, and actively monitor environmental degradation. VR, on the other hand, can assist in the creation of virtual experiences for global audiences, These innovative approaches align with the diffusion of innovations model, as they incorporate cutting-edge technology to address longstanding challenges in the preservation of heritage sites like the Taj Mahal.

While 3D Scanning and VR are responsible for the physical side of protecting the Taj, **Quantum Computing** upholds the digital and algorithmic side. Keeping in mind, that Quantum Computing is in its infancy when it comes

to application, many efforts to integrate it may be in vain. However, as previously discussed, in line with the diffusions of innovation theory, it is possible. When it comes specifically to the Taj Mahal, this technology holds promise in solving complex problems related to heritage conservation. Quantum computing can be used to enhance the accuracy and speed of **material analysis and simulation** (Camino et al., 2023). Material Analysis involves the identification of chemical and structural components of a material to in turn predict its electrical properties, catalytic effect, etc. Quantum Computing can be used to model the behaviour of various construction materials used to build the Taj Mahal. This would encourage a better understanding of how these materials degrade over time and what would be the best way to preserve them.

Furthermore, QCs (Quantum Computers) excel at processing and analyzing vast datasets. This capability can aid in the **identification of deteriorating patterns, structural weaknesses, and environmental factors** affecting the Taj Mahal. Advanced algorithms can process and analyze large volumes of data collected from sensors placed throughout the monument to monitor its condition. As previously discussed, the Taj Mahal is one monument adversely affected by weather and climate conditions. These factors play a heavy role in its preservation too. QCs can improve the **accuracy of weather and climate models**, helping conservators anticipate and plan for extreme weather events or climate changes that may impact the monument.

Finally, when considering the intersection of QC with 3D Scanning and Virtual Reality, the results would be incredible. Quantum computing can significantly accelerate the process of 3D scanning and modeling of historical sites, like the Taj Mahal. This can be invaluable in documenting the current condition and planning for restoration efforts, as well as in creating detailed virtual replicas for educational and research purposes.

Conclusion

In essence, this study advocates for a paradigm shift in heritage conservation, leveraging cutting-edge technologies as catalysts for innovative preservation methods. The convergence of 3D scanning, quantum computing, and VR presents a transformative opportunity to address the challenges posed by climate change, urbanization, tourism impacts, and illicit trade on historical artefacts and architecture.

There is an urgency to embrace contemporary solutions for safeguarding our cultural legacy in the face of natural and man-made threats. The significance of embracing these technological innovations lies in their potential to revolutionize heritage conservation. As witnessed through the case study of the Taj Mahal, 3D scanning, with its non-destructive precision, offers a tangible solution to document and preserve artefacts and architecture. Moreover, quantum computing, despite being in its early stages, holds promise in areas such as material analysis, weather modelling, and 3D scanning acceleration. Finally, VR has immense potential to support digital recreations and simulations of these structures, in turn, reducing tourism damage.

Overall, the answer to the research question is straightforward and indisputable. Through the adoption of these innovations, we not only bridge the gap between tradition and technology but also extend an invitation to a global audience to engage with and truly appreciate our shared history. The integration of these technologies into something as fundamental as our cultural heritage propels us toward a future where the past is not merely preserved but dynamically understood and cherished.

Bibliography

Al Jazeera (2018). 'Jewel of Brazilian culture' gutted in Rio blaze. [online] Al Jazeera. Available at: <https://www.aljazeera.com/features/2018/9/3/massive-fire-rips-through-200-year-old-rio-national-museum>.

Archi-Monarch (2022). *TAJ MAHAL ARCHITECTURAL ANALYSIS* * Archi-Monarch. [online] Archi-Monarch. Available at: <https://archi-monarch.com/taj-mahal-architectural-analysis/>.

Bera, D., Qian, L., Tseng, T.-K. and Holloway, P.H. (2010). Quantum Dots and Their Multimodal Applications: A Review. *Materials*, 3(4), pp.2260–2345. doi:<https://doi.org/10.3390/ma3042260>.

Blasetti, A.G., Petrucci, E., Cofini, V., Pizzi, B., Scimia, P., Pozzone, T., Necozone, S., Fusco, P. and Marinangeli, F. (2017). First Rescue Under the Rubble: The Medical Aid in the First Hours After the Earthquake in Amatrice (Italy) on August 24, 2016. *Prehospital and Disaster Medicine*, 33(1), pp.109–113. doi:<https://doi.org/10.1017/s1049023x17007075>.

Borg, J. and Nguyen, K. (2023). *The Rise of the Quantum Computing Industry -Identifying the key barriers of adoption of QC-technology as a service*. [online] Available at: <https://www.diva-portal.org/smash/get/diva2:1762635/FULLTEXT02>.

Bormann, P. and Saul, J. (2009). Earthquake Magnitude. *Encyclopedia of Complexity and Systems Science*, pp.2473–2496. doi:https://doi.org/10.1007/978-0-387-30440-3_151.

Cacciotti, R., Kaiser, A., Sardella, A., De Nuntiis, P., Drdácý, M., Hanus, C. and Bonazza, A. (2021). Climate change-induced disasters and cultural heritage: Optimizing management strategies in Central Europe. *Climate Risk Management*, [online] 32, p.100301. doi:<https://doi.org/10.1016/j.crm.2021.100301>.

Casey, N. (2018). Easter Island Is Eroding. *The New York Times*. [online] 15 Mar. Available at: <https://www.nytimes.com/interactive/2018/03/14/climate/easter-island-erosion.html>.

Civil Protection Department (2018). *Central Italy earthquake*. [online] emergenze.protezionecivile.gov.it. Available at: <https://emergenze.protezionecivile.gov.it/en/seismic/central-italy-earthquake-2016/#:~:text=At%203.36%20a.m.%20of%20August>.

Cosenza, E., Del Vecchio, C., Di Ludovico, M., Dolce, M., Moroni, C., Prota, A. and Renzi, E. (2018). The Italian guidelines for seismic risk classification of constructions: technical principles and validation. *Bulletin of Earthquake Engineering*, 16(12), pp.5905–5935. doi:<https://doi.org/10.1007/s10518-018-0431-8>.

Dacey, J. (2020). *Quantum dots help preserve historic limestone monuments*. [online] Physics World. Available at: <https://physicsworld.com/a/quantum-dots-help-preserve-historic-limestone-monuments/>.

Halton, C. (2023). *Diffusion Of Innovations Theory Definition*. [online] Investopedia. Available at: <https://www.investopedia.com/terms/d/diffusion-of-innovations-theory.asp>.

Kam, D.V. (2004). Cultural Calamities: Damage to Iraq's Museums, Libraries, and Archaeological Sites During the United States-Led War on Iraq. *Art Documentation: Journal of the Art Libraries Society of North America*, [online] 23(1), pp.4–11. Available at: <https://www.jstor.org/stable/27949280>.

Kiruthiga, K. and Thirumaran, K. (2019). Effects of urbanization on historical heritage buildings in Kumbakonam, Tamilnadu, India. *Frontiers of Architectural Research*, [online] 8(1), pp.94–105. doi:<https://doi.org/10.1016/j.foar.2018.09.002>.

Lowood, H.E. (2018). Virtual reality | computer science. In: *Encyclopædia Britannica*. [online] Available at: <https://www.britannica.com/technology/virtual-reality>.

Marak, Z.R., Tiwari, A. and Tiwari, S. (2019). Adoption of 3D printing technology: an Innovation Diffusion Theory perspective. *International Journal of Innovation*, 7(1), pp.87–103. doi:<https://doi.org/10.5585/iji.v7i1.393>.

Ostrander, M. (2020). *The Sea Versus St. Augustine*. [online] Hakai Magazine. Available at: <https://hakaimagazine.com/features/the-sea-versus-st-augustine/>.

Perappadan, B.S. (2015). Pollution, tourism threat to Taj. *The Hindu*. [online] 7 May. Available at: <https://www.thehindu.com/news/cities/Delhi/pollution-tourism-threat-to-taj-cse/article7182794.ece>.

Postma, A. and Schmuecker, D. (2017). Understanding and overcoming negative impacts of tourism in city destinations: conceptual model and strategic framework. *Journal of Tourism Futures*, [online] 3(2), pp.144–156. doi:<https://doi.org/10.1108/jtf-04-2017-0022>.

Sahin, I. (2006). Detailed review of Rogers' diffusion of innovations theory and educational technology-related studies based on Rogers' theory. *ResearchGate*, [online] 5(2). Available at:

https://www.researchgate.net/publication/284675572_Detailed_review_of_Rogers%27_diffusion_of_innovations_theory_and_educational_technology-related_studies_based_on_Rogers%27_theory.

Samuel, S. (2018). *It's Disturbingly Easy to Buy Iraq's Archeological Treasures*. [online] The Atlantic. Available at: <https://www.theatlantic.com/international/archive/2018/03/iraq-war-archeology-invasion/555200/>.

Sheldon, R. (2022). *What is Virtual Reality?* [online] WhatIs.com. Available at: <https://www.techtarget.com/whatis/definition/virtual-reality>.

Statista (2023). *India: national monument visitors by type 2022*. [online] Statista. Available at: <https://www.statista.com/statistics/1021726/india-national-monument-visitors-by-type/#statisticContainer>.

Tallahassee, FL Weather Forecast Office (2019). *Detailed Meteorological Summary on Hurricane Irma*. [online] Weather.gov. Available at: https://www.weather.gov/tae/Irma_technical_summary.

UNESCO (2020). *The Real Price of art: International UNESCO campaign reveals the hidden face of art trafficking | UNESCO*. [online] www.unesco.org. Available at: <https://www.unesco.org/en/articles/real-price-art-international-unesco-campaign-reveals-hidden-face-art-trafficking>.

Webuild S.p.A. (2020). *The relocation of Abu Simbel's Temples, Egypt - Webuild Project*. [online] www.youtube.com. Available at: https://www.youtube.com/watch?si=GJOvJfmFS25nxmWI&v=CgoGYya71Us&feature=youtu.be&ab_channel=WebuildS.p.A..

